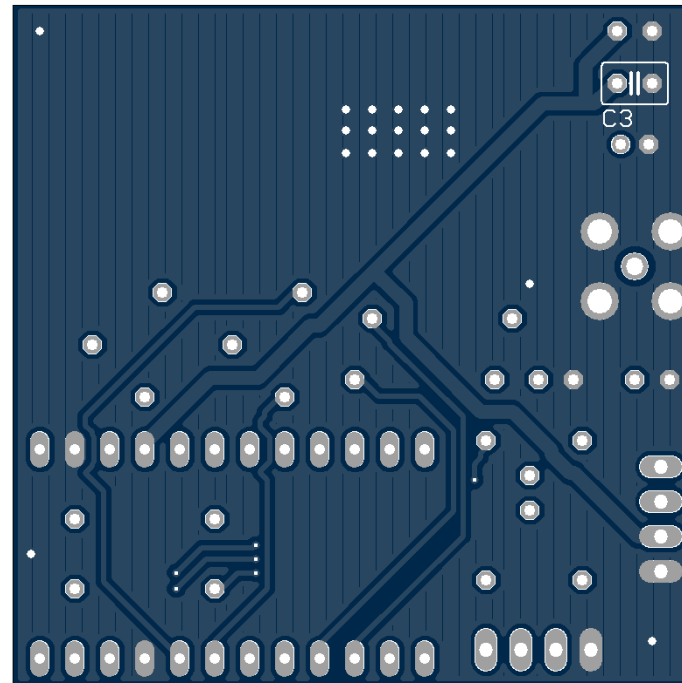
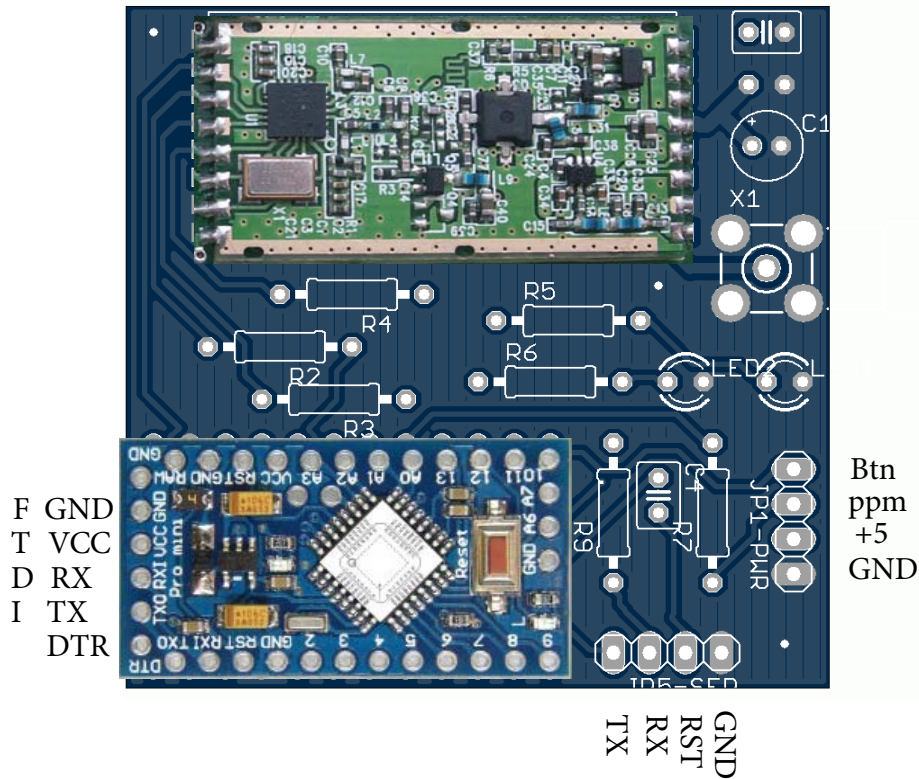


TX, RX, RTS, GND



3 x 0.25W 1K1 R8,R9,R10
1x 0.25W 2.2K R7,
4 x 0.25W 3.3K R1,R2,R3,R4

2 x 1.9 = 2.2 Volt Leds Led1 Led2
2 x 0.25W 150 Ohm R5,R6,
1 x 100µF 35V C1
3 x 0.1uF 50V DiscCeramic C2,C3,C4
1 x 100uf C5

1 x Arduino Pro Min
1 x RFM23BP-433Mhz-1W
1 x RP-SMA Female Jack Right Angle Solder PCB Mount X1

