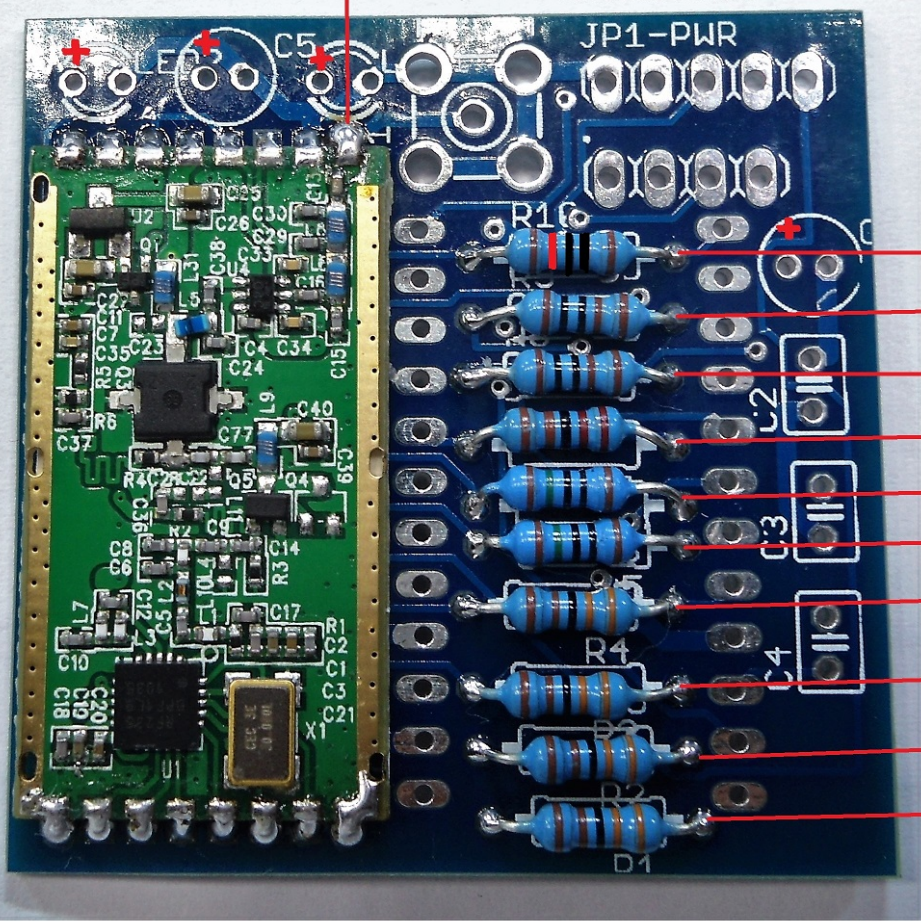




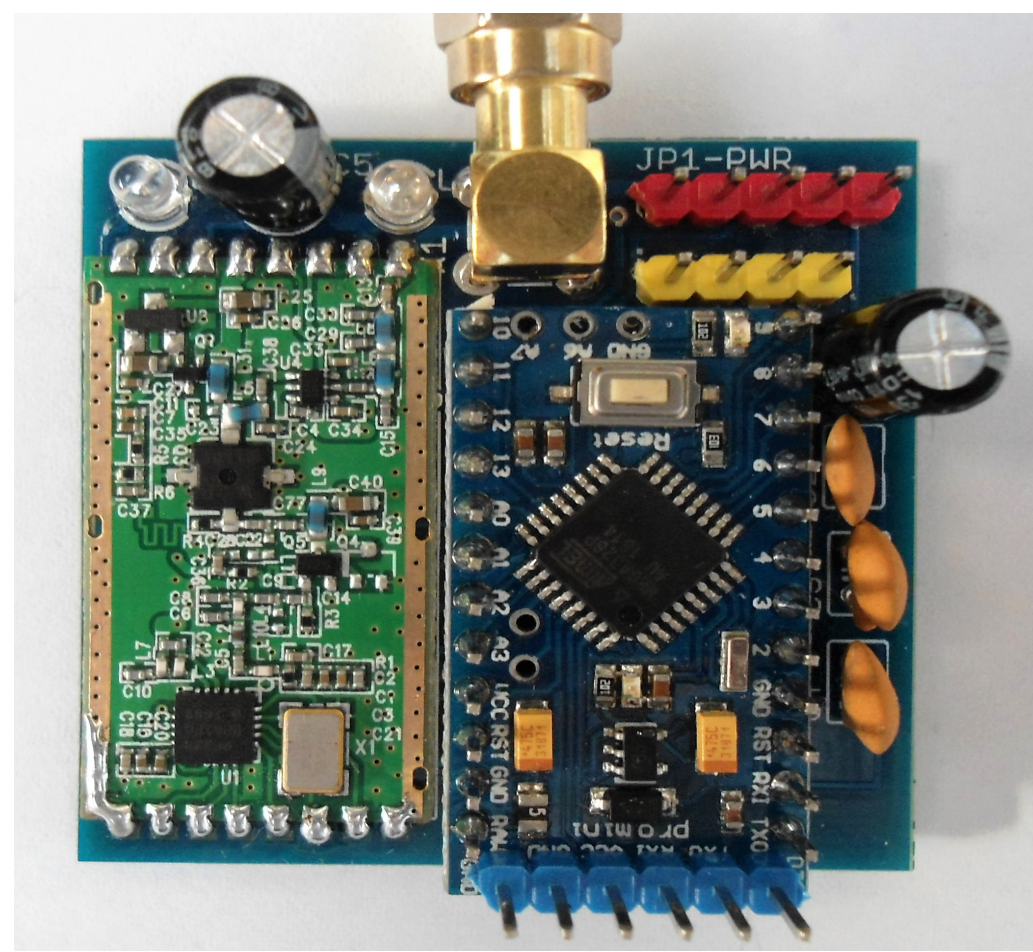
GND 5V PPM BT RSSI

ANT

GND RST RX TX



- R10 10K
- R9 1K1
- R8 1K1
- R7 2K2
- R6 150 OHM
- R5 150 OHM
- R4 3K3
- R3 3K3
- R2 3K3
- R1 3K3



- 2 x 0.25W 1K1 R8,R9,
- 1 x 0.25W 2.2K R7,
- 4 x 0.25W 3.3K R1,R2,R3,R4
- 1 x 0.25W 10K R10
- 2 x 1.9 = 2.2 Volt Leds Led1 Led2
- 2 x 0.25W 150 Ohm R5,R6,
- 2 x 100µF 35V C1 C5
- 3 x 0.1uF 50V DiscCeramic C2,C3,C4

- 1 x Arduino Pro Min
- 1 x RFM23BP-433Mhz-1W
- 1 x RP-SMA Female Jack Right Angle Solder PCB Mount X1

PPM output is the same as spongeboard A0

SOME OF THE PRO-MINI ARE DIFFERENT SIZES YOU MAY NEED TO FILE DOWN ONE AT PIN 9 TO MISS THE HEADER PINS